



Town of Annapolis Royal



Waste Management News

In this notice you will find information on changes to the way we manage our waste in Annapolis Royal. If you have additional questions after reviewing this flyer, please call 532-2043.

Clear Bag Program

In keeping with what is happening in Waste Management in other areas, the Town is implementing a Clear Bag Program. Other regions in Nova Scotia have switched to clear bags for garbage and have seen dramatic increases in recycling and composting.

On April 1, 2008 all residents and businesses will be required to use CLEAR bags for garbage and BLUE transparent bags for recycling. Sorting stays basically the same; the only thing you need to change is the colour of bags you use. Smaller non-transparent bags are not permitted inside the clear bag.

All bags used for garbage collection must be no longer than 39 inches when lying flat.

There will be a grace period for people to get used to the new system (April 1-June 30).

As of July 1, 2008 Clear Bags will be enforced.

For privacy issues, the program will allow for one regular green/black garbage bag per collection. If you are only generating one bag of garbage per pick up you can now increase the total bags of recyclables that you are leaving at curbside. The total bag limit for recyclables and garbage is 7, if you have only one bag of garbage you can leave 6 bags of recyclables at the curb for pick up.

Bag limits for the Clear Bag Program are:

1 black/green garbage bag

2 clear bags (garbage)

**Unlimited recyclables to a maximum of 7 bags in total
(garbage + recyclables)**

Note: The Town now diverts 60% of solid waste from landfill. We still have 40% to go.
This is just another step to zero!



Clear Bag (Garbage)



- potato chip bags & candy wrappers
- netted onion bags
- stickers
- clothing & cloth textiles—(other than those that can be dropped off for the Red Cross or other collection points)
- pet waste and kitty litter
- diapers
- freezer & zip lock bags
- plastics without a recycling symbol #1-7
- waxed cardboard
- toothpaste tubes
- cigarette ashes, butts & foils from packages
- latex gloves
- pencils, pens, crayons & markers

- all styrofoam
- frozen juice containers
- contaminated containers (such as motor oil containers)
- Tim Horton-type paper cups
- aluminum foil and plastic wrap
- light bulbs (non-fluorescent or energy efficient)
- soiled pizza boxes (more than 10% soiled)
- personal hygiene products
- empty paint & aerosol cans
- lids & caps from bottles & glass jars
- vacuum cleaner bags
- floor sweepings
- wooden or wax coated boxes



Paper (Blue Bag #1)



- newsprint & flyers
- construction paper
- envelopes, windows included
- magazines & catalogues
- paper egg cartons
- boxboard (remove all plastic inserts)
- file folders, shredded paper
- phone books
- office paper
- paper towel & toilet paper cores
- paperback novels & hard cover books (that are not accepted by the Library)
- dry, soiled paper towel & napkins
- pizza boxes (no more than 10% soiled)
- laundry soap boxes
- cat & dog food bags
- sugar & flour bags
- gift wrap (no foil)
- dry fast food wrappers
- waxed paper
- potato bags



Containers & Recyclables (Blue Bag #2)



- aluminum/tin cans (place lids in cans) & pie plates
- glass bottles and jars
- juice containers and boxes
- all beverage containers (no caps)
- all milk cartons/containers
- grocery & bread bags (recycling symbol #4)
- plastic containers #1-7

Garbage & Recycle Collection Days Bi-Weekly Pick Up

Tuesdays: Downtown side of Traffic Lights

Wednesdays: Traffic Lights to Lequille

2008

January

Tues 8 Wed 9
Tues 22 Wed 23

February

Tues 5 Wed 6
Tues 19 Wed 20

March

Tues 4 Wed 5
Tues 18 Wed 19

April

Tues 1 Wed 2
Tues 15 Wed 16
Tues 29 Wed 30

May

Tues 13 Wed 14
Tues 27 Wed 28

June

Tues 10 Wed 11
Tues 24 Wed 25

July

Tues 8 Wed 9
Tues 22 Wed 23

August

Tues 5 Wed 6
Tues 19 Wed 20

September

Tues 2 Wed 3
Tues 16 Wed 17
Tues 30

October

Wed 1
Tues 14 Wed 15
Tues 28 Wed 29

November

Tues 11 Wed 12
Tues 25 Wed 26

December

Tues 9 Wed 10
Tues 23 Wed 24

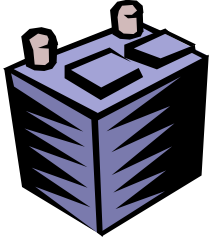
Public Works Drop Off Site

Batteries and Fluorescent Light Bulbs

Compact fluorescent light bulbs and fluorescent lighting tubes contain mercury which is considered hazardous waste. These bulbs can be returned, free of charge to the Management Centre in Lawrencetown.



Effective April 1, 2008 a drop off site for these light bulbs and tubes will be available at the Public Works yard.



Batteries are considered hazardous waste and are accepted, free of charge, at the Management Centre in Lawrencetown.

Effective April 1, 2008 a drop off site for automotive batteries will be available at the Public Works Yard.



Batteries Are Not Garbage

Batteries are considered hazardous waste and are accepted, free of charge, at the Management Centre in Lawrencetown.

You can also drop off your household batteries for proper disposal at the Town Hall.

Rechargeable batteries are often accepted, for recycling, at retail outlets where they are sold.



Neighbourhood Compost Collectors

- table scraps
- meat, fish, bones & dairy
- bread, pasta & rice
- tea bags, coffee grounds
- egg & nut shells
- cooking oil, grease & fat
- vegetables, fruits & peelings
- all cooked and uncooked foods
- baked goods
- spoiled vegetables and fish
- saturated paper towels & napkins
- coffee filters
- newspaper liner in kitchen compost receptacles

Neighbourhood Compost Collectors are located at:

- Champlain Drive
- Legion Parking Lot
- Public Works Entrance
- Prince William Street

Leaf & Yard Waste—Drop-Off Site



- Grass, Leaves & Brush
- House & Garden Plant Waste
- Sawdust



Effective April 1, 2008 the Leaf & Yard Waste Drop-Off Site will be open between the hours of 8:00 am and 4:00 pm., Monday to Friday. The gate will be locked and keys will be available at Town Hall during regular office hours for residents only. A Deposit of \$25.00 is required for a personal key.

Four-Stream Receptacles

Please note that the Four-Stream Receptacles located throughout Annapolis Royal are meant for the use of pedestrians.

These receptacles are not for disposal of household garbage.

The receptacles are in the process of being redesigned in an effort to prevent the amount of illegal dumping that is currently taking place. Any person who disposes of bagged household garbage in the receptacles may be charged with an offence and fined.

Recycling Facts



- All plastic rigid containers are recyclable. Put them in your blue bag with milk cartons, metal and glass.
- Metal lids are recyclable, just tuck them inside the container they came from.
- Last year the Valley area sent more than 82,000 tires for recycling!
- Recyclable containers are sent along a conveyor belt and are further sorted. Recyclable papers go on a different conveyor, that is why it is important to put containers in a bag separate from papers.



ANNAPOLIS ROYAL

Town of Annapolis Royal
285 St. George Street
Annapolis Royal, NS
B0S 1A0
Phone: 902-532-2043

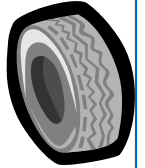
Tips for Recycling

-A composting container may be kept in your freezer to eliminate odours.



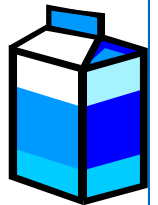
Paint cans that still have paint in them can be returned to the local Enviro-Depot in Lequille. Empty paint cans, with the lid off go in your clear garbage bag.

Return your used car and truck tires (up to four at a time) to any tire retailer in the Province.



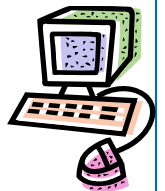
Oil retailers are required to accept used oil for recycling.

Rinse milk cartons and put them in your blue recycling bag with plastic, metal and glass.



Medical sharps like needles and lancets do not go in the garbage. They can be returned to any pharmacy through the Safe Sharps Program.

Computer monitors and televisions are now accepted for disposal at the Enviro-Depot in Lequille.



Things that can cut or pierce the skin could harm the collector if placed in a garbage bag. Broken glass or other sharp items should be wrapped in cardboard or other protective material and then be placed inside a garbage bag. If the sharp item is too large to fit inside a garbage bag, as with other oversize items it should go out for Spring or Fall Cleanup.

Message from the Mayor

Here it is mid-January, I can't find my Green Cone or at least I can't easily get to it. I don't have a dog to walk, so I walk my kitchen catcher instead, over to the Neighbourhood Composter.

I bought a Green Cone or "digester" when the Town first started offering them for sale. I already had a composter, so I use the green cone to store and digest fats, bones, oils, dairy products, eggs and meat scraps in my back yard. The Green Cone does not produce compost but simply allows these foods to decompose and their goodness to drain into the ground. It is best for households to use both a Backyard Composter and a Green Cone to dispose of their organics. Remember that your Green Cone is NOT intended for yard waste such leaves and twigs etc..

When don't I put these things in my Green Cone? If there is a chance I will overload my Green Cone. For example, whenever I have a big "cooked dinner" (a roast beef or chicken or turkey), I take all of the bones, vegetable peelings and table scraps to the neighbourhood composter. Also, if I do a serious refrigerator clean out, I take those strange surprises hiding in the back of the refrigerator, or in the bottom of the freezer to the neighbourhood composter as well.

Over time, the Green Cone basket should contain some dark, moist residue. The speed at which this residue is amassed will depend on what kind of food waste is added, the soil drainage, the soil texture, and the time of year. I have found that our Green Cone, which is used by four people, needs to be harvested every one to two years. Spring or fall is the best time to harvest the residue. To harvest the compost, unscrew the cone section from the basket and take the residue out of the basket. You can bury the residue in the garden at least eight inches deep as a soil enhancer. The residue may be smelly, but this is a quick and easy way to harvest. After harvest, replace the cone section on the basket. The alternative is to call Public Works and let them know that you are emptying your Green Cone. Arrange to bring this "stuff" in buckets to the Public Works yard. Kevin and the guys will add it to the other material being composted.

Every time I use my Green Cone, composter, or our neighbourhood composter, I do something positive for the environment. Everything compostable stays in my yard or our Town to become compost. Because the Town of Annapolis Royal believes in the concept of decreasing volumes sent to landfills and increasing the reduce-reuse-recycle mindset, we have embarked on a policy called Zero Waste. Town programmes are designed to enable residents and businesses to be able to dispose of waste in an environmentally responsible manner, with the ultimate goal of "Zero Waste". Loosely, Annapolis Royal will reach the goal of "Zero Waste" when all waste produced in this town is disposed of through composting, recycling and other environmentally sound programmes to the extent possible.

Mayor John Kinsella



Green Cones



- fats & oils
- dairy products
- egg shells
- meat scraps
- leaves

The Town offers a 50% rebate for all Green Cones

Backyard Composters (Earth Makers)

- tea bags, coffee grounds
- egg & nut shells
- vegetables, fruits & peelings
- plant material
- leaves



The Town offers a 50% rebate for all standard backyard earth makers (composters)